



SIGNATURE
LIGHTING

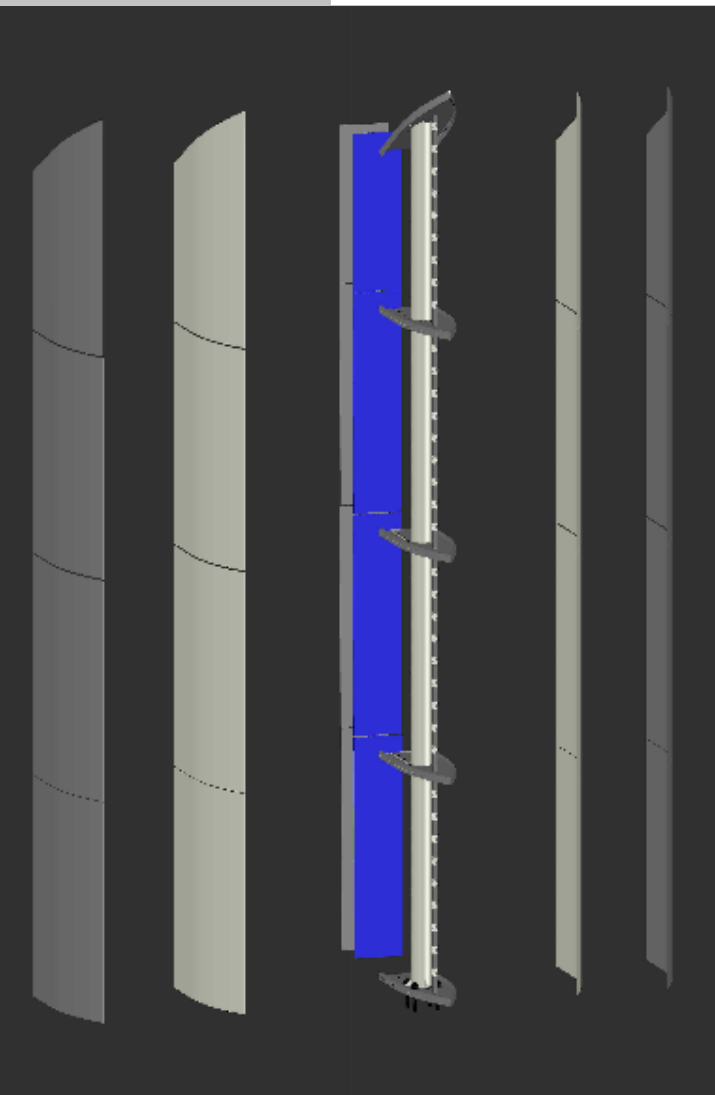
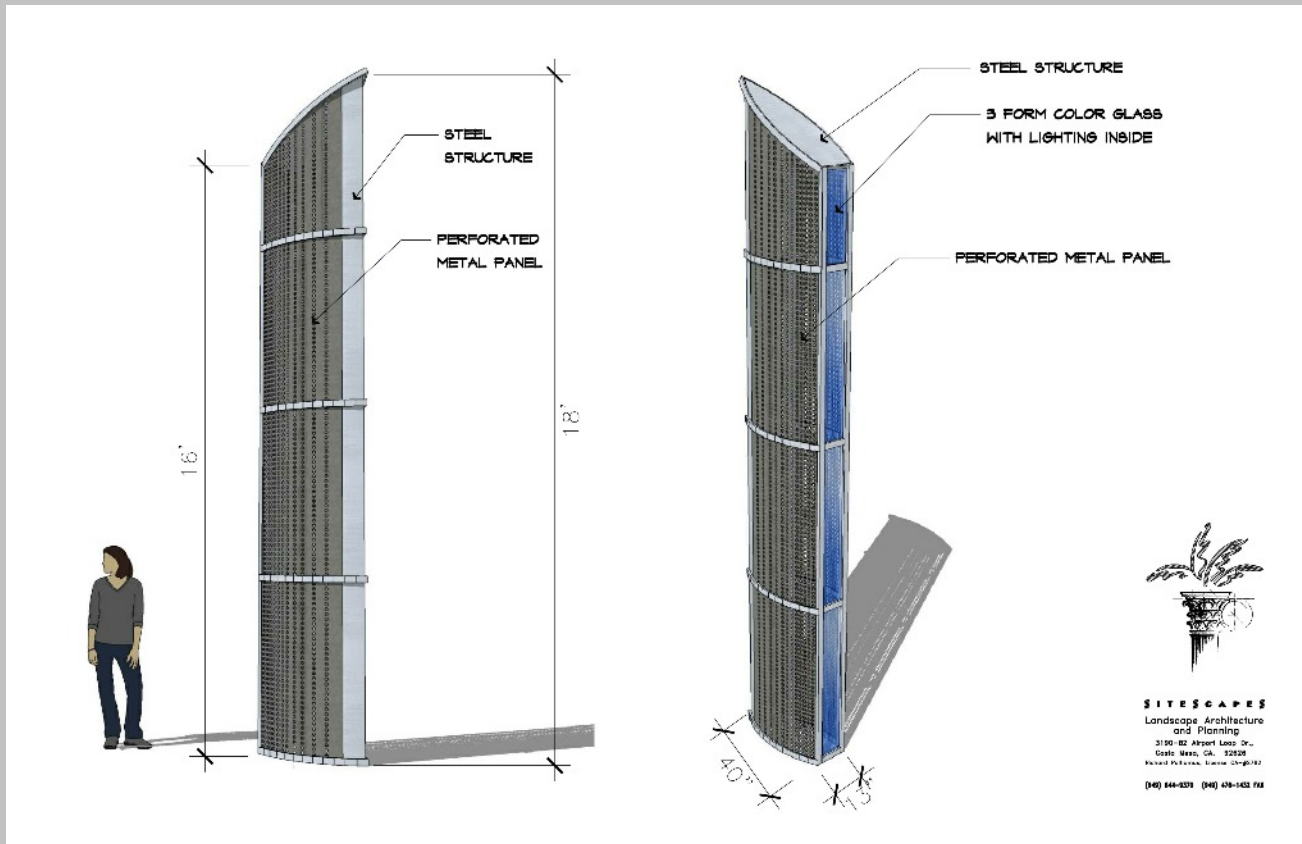
METRO AT MAIN

CASE STUDY



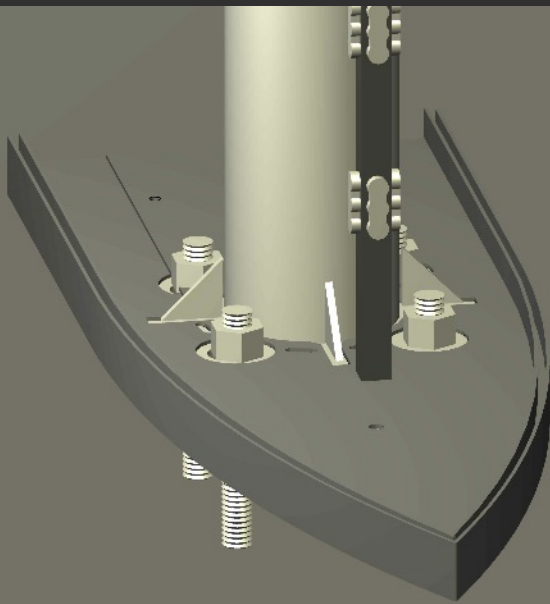
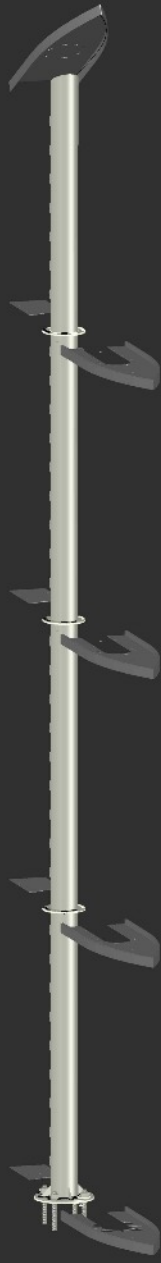
The Design

The drawing to the right was provided by the architect for this project. They originally wanted to use a hollow shell with blue glass on the back however, we change it to be more suited for commercial use.



The CAD drawing to the left was Signature's shop drawing. We wanted to show them that we were going to add a layer of acrylic to help keep the bugs out of the fixtures. We also wanted to change the glass on the back to acrylic so it would be harder and less dangerous if the back panel broke. These CAD drawings help show the designers what we want create and the also help the contractor understand how to install the fixtures.

From Drawings to Reality







DRIVE THRU
NOW OPEN!

418

PHARMACY

METRO MAIN

For more information or to get in touch, visit:
Signature-Ltg.com